



POLARIS REALTY

**Toronto: 2585 – 2605 Skymark**



**Introduction**

Located in the heart of the Airport Corporate Centre, **2585-2605 Skymark** is a two storey, drive up design that offers a competitive alternative to the traditional mid-rise suburban office building.

**Architectural/Engineering/Construction**

- approximately 70,000 RSF
- three, 2 storey buildings
- steel frame superstructure
- precast concrete fascia with punched windows
- 9' ceiling height
- 21' x 21' column spacing
- second floor balconies
- walk-up to second floor

**Power/Lighting**

- 24" x 48" ceiling mounted fluorescents
- 2.0 watts per square foot for lighting
- 3.5 watts per square foot for power/ HVAC

**Communications**

- copper backbone infrastructure

**HVAC**

- roof top units

**Life Safety/Security**

- individual security system

**Parking**

- 3 per 1,000 RSF

### Floorplan: ground floor



Ground Floor  
2595 Skymark Ave.



Ground Floor  
2605 Skymark Ave.

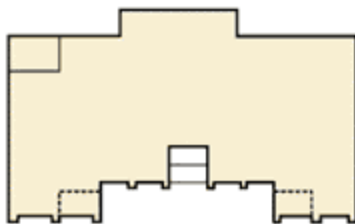


Ground Floor  
2585 Skymark Ave.

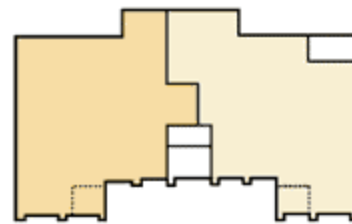
### Leasing Floorplan: ground floor



**Ground Floor**  
2595 Skymark Ave.



**Ground Floor**  
2605 Skymark Ave.



**Ground Floor**  
2585 Skymark Ave.

#### Legend

- Leasable areas
- Hallways
- Washrooms



### Toronto Properties Map:

